



# Vortex Flowmeter

## »» SUF/SDUF Series Type Selection



### 모델명칭 (Model Direction)

Marking	Description
SVF	Seba Vortex Flowmeter
SDVF	Seba LCD Display Vortex Flowmeter

### A 본체재질 (Material of Body)

Marking	Material of Body
PC	PVC
SS	SUS 316
PA	PFA

### B 유량범위 (Flow Range)

Marking	Flow Range (LPM)
020	2~20
030	4~30
040	4~40
080	9~80
090	10~90
120	15~120
200	35~200
300	50~300
500	80~500

### C 접속방식 (Connection Type)

Marking	Connection Type
U	Union
F	Flange
MT	Male PT
MF	Flare

### E 오링재질 (Material of O-Ring)

Marking	Material of O-Ring
F	FKM (Viton)
V	Acid-tolerant Viton
E	EPDM
K	Kalrez
P	Perfluor

### D 접속튜브 (Connection Tube)

Marking	Connection Tube
1/2	1/2"
3/4	3/4"
1/1	1/1"
1.1/4	1.1/4"
1.1/2	1.1/2"
2/1	2/1"

# | Change the World |

## »» SVF-PC-U Series

초순수, 냉각수 및 약산용 유량계



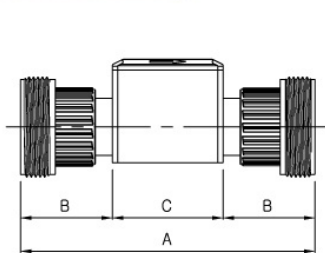
### 재원(Specification)

Model	SVF-PC-U Series
사용유체(Fluid)	Chemicals, D.I Water
유체압력(Operating Pressure)	0~5kgf/cm <sup>2</sup>
유체온도(Operating Temp.)	0~50℃
입력전원(Input Power)	24VDC
출력신호(Output Signal)	4~20mA
정밀도(Accuracy)	±3% F.S
재현성(Repeatability)	±1%
접속방식(Connection Type)	Union
바디재질(Material of Body)	PVC

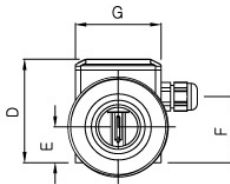


Vortex Flowmeter  
SVF-PC-U Series

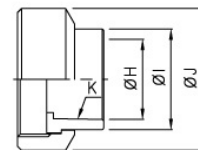
### 치수(Dimensions)



Front View



Right View



Size	Fitting Type	A	B	C	D	E	F	G	H	I	J	K
3/4"	Union	135.0	36.5	62.0	60.0	17.0	41.0	48.0	26.3	35.0	54.0	1/42
1/1"	Union	151.0	44.5	62.0	64.0	20.0	10.0	48.0	32.3	43.0	67.0	1/44
1.1/4"	Union	180.0	59.0	62.0	71.0	23.0	52.0	48.0	38.4	52.5	78.0	1/37
1.1/2"	Union	235.0	84.0	67.0	83.0	28.0	63.0	65.0	48.4	61.0	87.0	1/38
2/1"	Union	275.0	104.0	67.0	93.0	34.0	73.0	65.0	60.5	76.0	107.0	1/34

\* 본 카탈로그에 표시된 내용(도면 및 치수)은 제품의 품질향상을 위해 예고없이 변경될 수 있습니다.



# Vortex Flowmeter

## »» SUF-SS-F Series

솔벤트, 냉각수 및 유기용 유량계

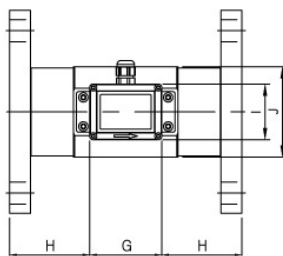


### 재원 (Specification)

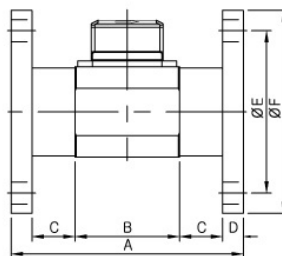
Model	SVF-SS-F Series
사용유체(Fluid)	Chemicals, D.I Water, Solvent
유체압력(Operating Pressure)	0~5kgf/cm <sup>2</sup>
유체온도(Operating Temp.)	0~60℃, 0~90℃(Option)
입력전원(Input Power)	24VDC
출력신호(Output Signal)	4~20mA
정밀도(Accuracy)	±3% F.S
재현성(Repeatability)	±1%
접속방식(Connection Type)	Flange
바디재질(Material of Body)	SUS 316



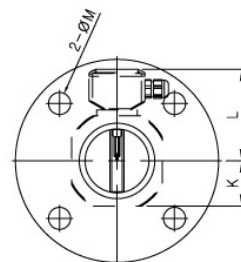
### 치수 (Dimensions)



Top View



Front View



Right View

Size	Fitting Type	A	B	C	D	E	F	G	H	I	J	K	L	M
1/1"	Flange	135.0	65.0	21.0	14.0	90.0	125.0	62.0	36.5	48.0	45.0	20.0	60.0	19.0
1.1/4"	Flange	150.0	75.0	21.5	16.0	100.0	135.0	62.0	44.0	48.0	50.0	25.0	65.0	19.0
1.1/2"	Flange	165.0	80.0	26.5	16.0	105.0	140.0	62.0	51.5	48.0	60.0	30.0	70.0	19.0
2/1"	Flange	180.0	85.0	31.5	16.0	120.0	155.0	62.0	59.0	48.0	68.0	34.0	74.0	19.0
*2.1/2"	Flange	200.0	90.0	37.0	18.0	140.0	175.0	62.0	69.0	48.0	78.0	39.0	79.0	19.0

\* 본 카탈로그에 표시된 내용(도면 및 치수)은 제품의 품질향상을 위해 예고없이 변경될 수 있습니다.

Change the World

## »» SVF-SS-MT Series

솔벤트, 유기용 및 칠러용 유량계



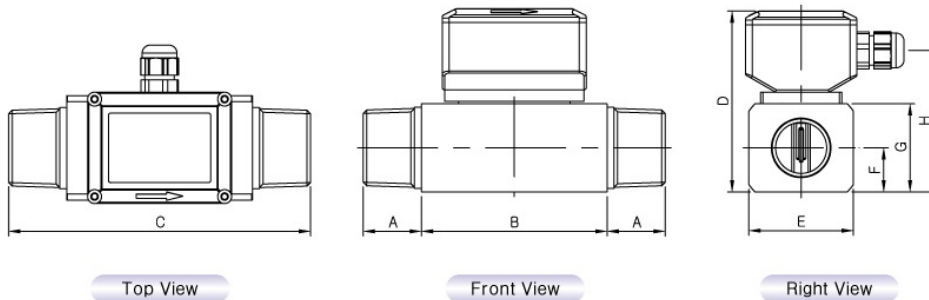
### 재원 (Specification)

Model	SVF-SS-MT Series
사용유체(Fluid)	Chemicals, D.I Water, Solvent
유체압력(Operating Pressure)	0~5kgf/cm <sup>2</sup>
유체온도(Operating Temp.)	0~60℃, 0~90℃(Option)
입력전원(Input Power)	24VDC
출력신호(Output Signal)	4~20mA
정밀도(Accuracy)	±3% F.S
재현성(Repeatability)	±1%
접속방식(Connection Type)	Male PT
바디재질(Material of Body)	SUS 316



Vortex Flowmeter  
SVF-SS-MT Series

### 치수 (Dimensions)



Size	Fitting Type	A	B	C	D	E	F	G	H
1/2"	Male PT	19.0	65.0	103.0	66.0	35.0	13.0	26.0	49.0
3/4"	Male PT	20.0	70.0	110.0	74.0	40.0	17.0	34.0	57.0
1/1"	Male PT	25.0	80.0	130.0	78.0	45.0	19.0	38.0	61.0

\* 본 카탈로그에 표시된 내용(도면 및 치수)은 제품의 품질향상을 위해 예고없이 변경될 수 있습니다.



# Vortex Flowmeter

## » SDVF-PC-U Series

초순수, 냉각수 및 약산용 유량계

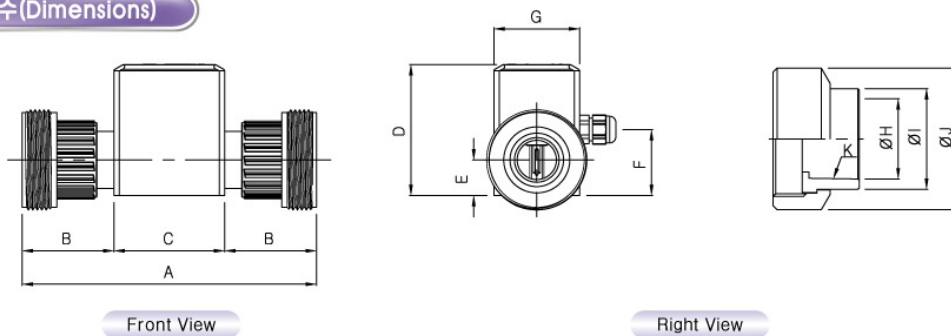


### 재원 (Specification)

Model	SDVF-PC-U Series
사용유체(Fluid)	Chemicals, D.I Water
유체압력(Operating Pressure)	0~5kgf/cm <sup>2</sup>
유체온도(Operating Temp.)	0~50°C
입력전원(Input Power)	24VDC
출력신호(Output Signal)	4~20mA, Alarm(Optional)
정밀도(Accuracy)	±3% F.S
재현성(Repeatability)	±1%
접속방식(Connection Type)	Union
바디재질(Material of Body)	PVC



### 치수 (Dimensions)



Size	Fitting Type	A	B	C	D	E	F	G	H	I	J	K
3/4"	Union	135.0	36.5	62.0	75.0	17.0	41.0	48.0	26.3	35.0	54.0	1/42
1/1"	Union	151.0	44.5	62.0	79.0	20.0	10.0	48.0	32.3	43.0	67.0	1/44
1.1/4"	Union	180.0	59.0	62.0	86.5	23.0	52.0	48.0	38.4	52.5	78.0	1/37
1.1/2"	Union	235.0	84.0	67.0	98.5	28.0	63.0	65.0	48.4	61.0	87.0	1/38
2/1"	Union	275.0	104.0	67.0	108.5	34.0	73.0	65.0	60.5	76.0	107.0	1/34

\* 본 카탈로그에 표시된 내용(도면 및 치수)은 제품의 품질향상을 위해 예고없이 변경될 수 있습니다.

Change the World

## SDVF-SS-F Series

솔벤트, 냉각수 및 유기용 유량계



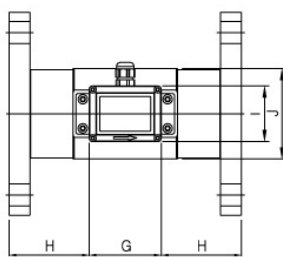
### 재원(Specification)

Model	SDVF-SS-F Series
사용유체(Fluid)	Chemicals, D.I Water, Solvent
유체압력(Operating Pressure)	0~5kgf/cm <sup>2</sup>
유체온도(Operating Temp.)	0~60℃, 0~90℃(Option)
입력전원(Input Power)	24VDC
출력신호(Output Signal)	4~20mA, Alarm(Optional)
정밀도(Accuracy)	±3% F.S
재현성(Repeatability)	±1%
접속방식(Connection Type)	Flange
바디재질(Material of Body)	SUS 316

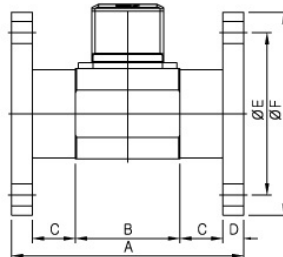


Vortex Flowmeter  
SDVF-SS-F Series

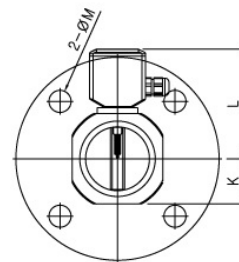
### 치수(Dimensions)



Top View



Front View



Right View

Size	Fitting Type	A	B	C	D	E	F	G	H	I	J	K	L	M
1/1"	Flange	135.0	65.0	21.0	14.0	90.0	125.0	62.0	36.5	48.0	45.0	20.0	75.5	19.0
1.1/4"	Flange	150.0	75.0	21.5	16.0	100.0	135.0	62.0	44.0	48.0	50.0	25.0	80.5	19.0
1.1/2"	Flange	165.0	80.0	26.5	16.0	105.0	140.0	62.0	51.5	48.0	60.0	30.0	85.5	19.0
2/1"	Flange	180.0	85.0	31.5	16.0	120.0	155.0	62.0	59.0	48.0	68.0	34.0	89.5	19.0
*2.1/2"	Flange	200.0	90.0	37.0	18.0	140.0	175.0	62.0	69.0	48.0	78.0	39.0	94.5	19.0

\* 본 카탈로그에 표시된 내용(도면 및 치수)은 제품의 품질향상을 위해 예고없이 변경될 수 있습니다.



# Vortex Flowmeter

## » SDVF-SS-MT Series

솔벤트, 유기용 및 칠러용 유량계



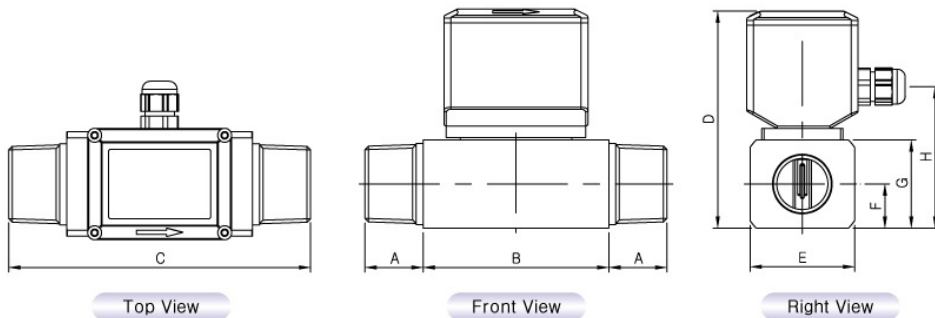
### 재원(Specification)

Model	SDVF-SS-MT Series
사용유체(Fluid)	Chemicals, D.I Water, Solvent
유체압력(Operating Pressure)	0~5kgf/cm <sup>2</sup>
유체온도(Operating Temp.)	0~60°C, 0~90°C(Option)
입력전원(Input Power)	24VDC
출력신호(Output Signal)	4~20mA, Alarm(Option)
정밀도(Accuracy)	±3% F.S
재현성(Repeatability)	±1%
접속방식(Connection Type)	Male PT
바디재질(Material of Body)	SUS 316



Vortex Flowmeter  
SDVF-SS-MT Series

### 치수(Dimensions)



Size	Fitting Type	A	B	C	D	E	F	G	H
1/2"	Male PT	19.0	65.0	103.0	81.5	35.0	13.0	26.0	49.0
3/4"	Male PT	20.0	70.0	110.0	89.5	40.0	17.0	34.0	57.0
1/1"	Male PT	25.0	80.0	130.0	93.5	45.0	19.0	38.0	61.0

\* 본 카탈로그에 표시된 내용(도면 및 치수)은 제품의 품질향상을 위해 예고없이 변경될 수 있습니다.

Change the World

## »» SVF-PA-MF Series

Chemical & 슬러리용 와류 유량계



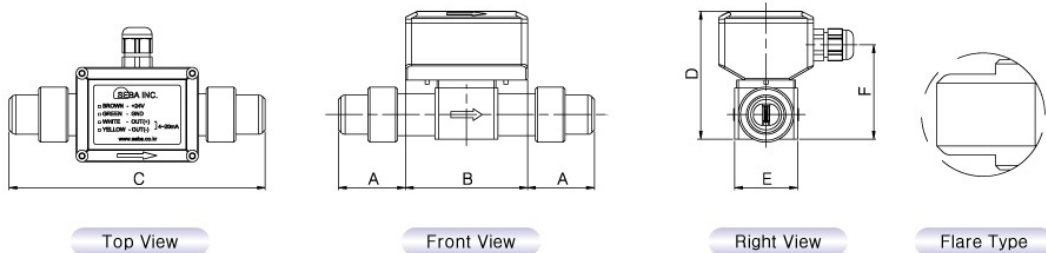
### 재원(Specification)

Model	SVF-PA-MF Series
사용유체(Fluid)	Chemicals, D.I Water, Solvent
유체압력(Operating Pressure)	0~5kgf/cm <sup>2</sup>
유체온도(Operating Temp.)	0~60℃, 0~90℃(Option)
입력전원(Input Power)	24VDC
출력신호(Output Signal)	4~20mA, Alarm(Optional)
정밀도(Accuracy)	±2% F.S
재현성(Repeatability)	±1%
접속방식(Connection Type)	Flare
바디재질(Material of Body)	PFA



Vortex Flowmeter  
SVF-PA-MF Series

### 치수(Dimensions)



Size	Fitting Type	A	B	C	D	E	F
1/2"	Flare	34.0	62.0	130.0	65.0	32.0	48.0
3/4"	Flare	34.0	62.0	130.0	65.0	32.0	48.0
1 1/4"	Flare	42.0	62.0	146.0	65.0	32.0	53.0

\* 본 카탈로그에 표시된 내용(도면 및 치수)은 제품의 품질향상을 위해 예고없이 변경될 수 있습니다.





# Vortex Flowmeter

## » SDVF-PA-MF Series

Chemical & 슬러리용 와류 유량계

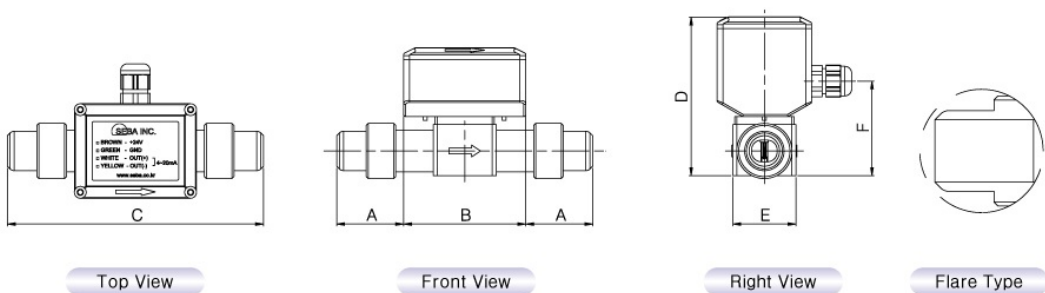


### 재원 (Specification)

Model	SDVF-PA-MF Series
사용유체(Fluid)	Chemicals, D.I Water, Solvent
유체압력(Operating Pressure)	0~5kgf/cm <sup>2</sup>
유체온도(Operating Temp.)	0~60°C, 0~90°C(Option)
입력전원(Input Power)	24VDC
출력신호(Output Signal)	4~20mA, Alarm(Option)
정밀도(Accuracy)	±2% F.S
재현성(Repeatability)	±1%
접속방식(Connection Type)	Flare
바디재질(Material of Body)	PFA



### 치수 (Dimensions)

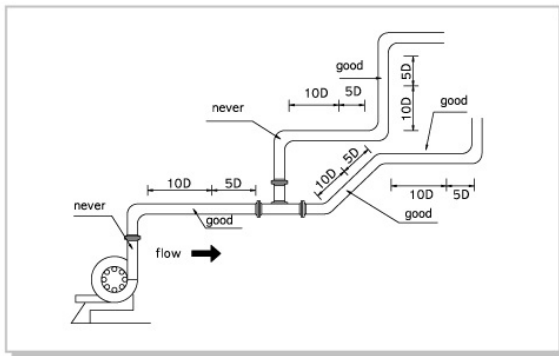


Size	Fitting Type	A	B	C	D	E	F
1/2"	Flare	34.0	62.0	130.0	80.5	32.0	48.0
3/4"	Flare	34.0	62.0	130.0	80.5	32.0	48.0
1/1"	Flare	42.0	62.0	146.0	85.5	32.0	53.0

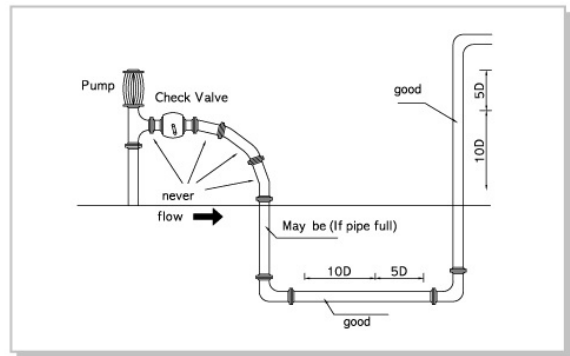
\* 본 카탈로그에 표시된 내용(도면 및 치수)은 제품의 품질향상을 위해 예고없이 변경될 수 있습니다.

# Change the World

## 센서 설치 참고도 (Sensor Installation)



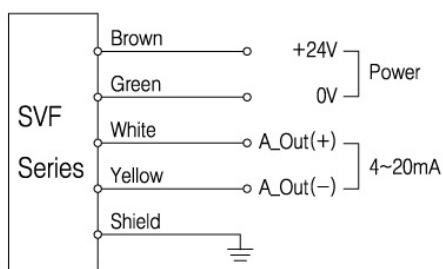
장소 선택 / Site Selection



센서 위치 / Sensor Location

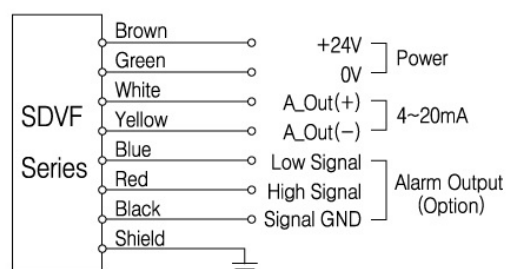
## 배선결선도 (Method of Wire Connection)

### SVF Series



- Voltage Output Type으로 변경 시 A\_Out(+), A\_Out(-) 양단에 250Ω 저항을 연결하면 1~5V Voltage로 출력됩니다.
- If you want to change voltage output type(1~5V Voltage), please connect 250 Ω on A\_Out(+), A\_Out(-) both side.

### SDVF Series



- Alarm Signal Output Model은 Option입니다.
- Alarm Signal Output은 Photo\_coupler Open Controller 출력으로 Low/High Signal 출력단자에 Pull-up 저항을 연결하여 사용바랍니다.
- Alarm Signal Output model is Option
- Alarm Signal Output is photo\_coupler open collector output method. Please use as connect Pull-up resistor to Low/High Signal terminals.